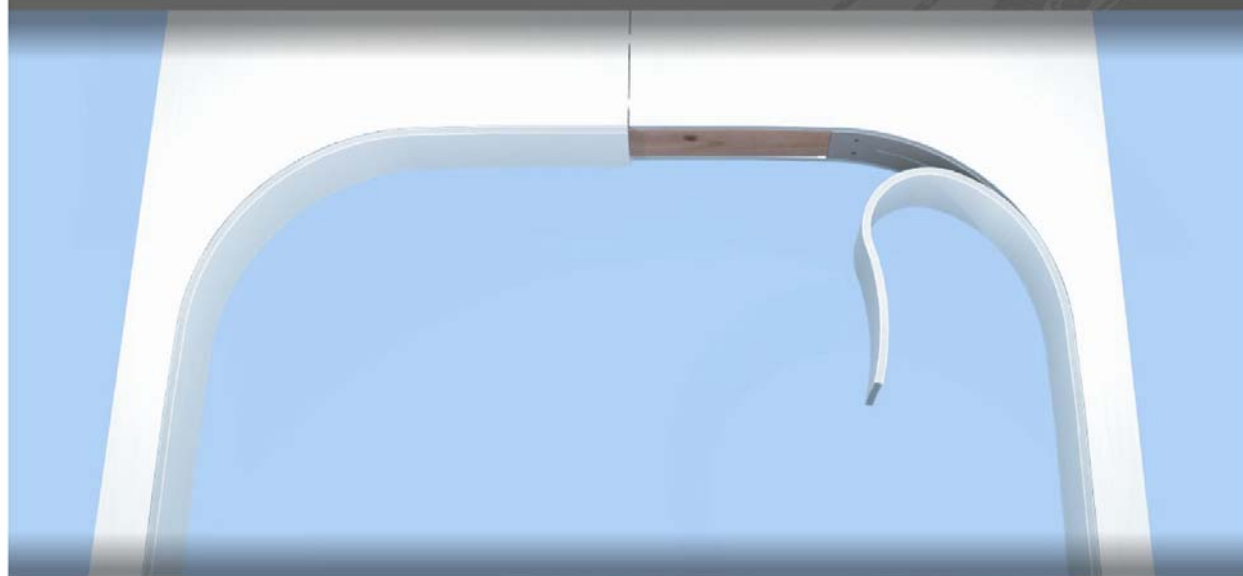


UNIVERSAL

ARCH KIT

by **ARCHWAYS
&
CEILINGS**
MADE EASY

DRYWALL INSTRUCTIONS



FITS ALL OPENINGS

TOLL
FREE

855-ARCHPRO

(855-272-4776)

www.ArchKit.com



We also make
QUICK, EASY
and
AFFORDABLE
ARCHED CEILINGS

STAY AHEAD OF THE CURVE!



Visit www.ArchKit.com to:

VIEW 
PICTURES

WATCH 
VIDEOS

DOWNLOAD 
INSTRUCTIONS

TOLL
FREE

855-ARCHPRO
(855-272-4776)

COVE CEILINGS

BARREL VAULTS

GROIN VAULTS

DOME CEILINGS

UNIVERSAL

ARCH KIT

by

ARCHWAYS
& CEILINGS
MADE EASY

WHAT YOU'LL NEED *for* DRYWALL

- ➔ Measuring Tape
- ➔ Pencil
- ➔ Square
- ➔ Water
- ➔ Bucket & Sponge
- ➔ Wallboard Saw / Utility Knife
- ➔ Drywall Router (Optional)
- ➔ Sanding Paper
- ➔ Eye Protection
- ➔ Head Protection
- ➔ Screw Gun
- ➔ Drywall Screws



DISCLAIMER: Standard safety precautions should be taken when installing Arch-Rite® arches. Installer should be familiar with safe operating procedures for power tools, wood working tools, and ANY ladders necessary for installation. The installer should follow published installation instructions and wear proper head and eye protection. Arch-Rite® and its Licensees assume no liability for any injury or accident as a result of installing any Arch-Rite® products. All Arch-Rite® products are designed to bear only the weight of drywall, drywall products, paint, trim and/or finishing items. No Arch-Rite® products are designed to bear the weight and forces of other framing members. All Arch-Rite® products are to be used for aesthetic purposes and are non load-bearing.

THANK YOU

FOR PURCHASING THE UNIVERSAL ARCH KIT!

We at Archways & Ceilings are cut from a different cloth. We really do care and take pride in our products and work. It's not just talk; we back it up. Part of our mission statement says, that we exist to "create an environment of creativity and constant improvement by soliciting feedback and by being attentive to our customer's needs." The Universal Arch Kit has evolved from this statement as it has been three years in the making through several rounds of discussion with our customers, product design, product redesign, and testing to get this product just right. Now after three years, we still wish for your feedback to make this product even better. It is still important today as it was to us yesterday that we live up to our claims and that what we promise is a reality for you. To prove it, you have direct access to me, Director of Product Design, by emailing me directly at Russell@ArchKit.com.

Sincerely,

Russell Scott

Director of Product Design
Universal Arch Kit

FINDING YOUR DRYWALL INSTRUCTIONS

Depending upon the arch style you choose during installation along with whether you installed to new construction or in a remodel will determine which set of drywall instructions you will use.

Before you can begin drywalling your Universal Arch Kit, first find your arch style you choose during installation.



Now that you have found the smooth arch style you choose during installation, locate your construction setting below: new construction or in a remodel.



Now that you have found the stepped arch style you choose during installation, locate your construction setting below: new construction or in a remodel.

NEW CONSTRUCTION



Continue on to **page 6** for the instructions on drywalling a smooth style arch kit to an opening in new construction.

REMODEL



Continue on to **page 7** for the instructions on drywalling a smooth style arch kit to an opening in a remodel.

NEW CONSTRUCTION



Continue on to **page 8** for the instructions on drywalling a stepped style arch kit to an opening in new construction.

REMODEL



Continue on to **page 9** for the instructions on drywalling a stepped style arch kit to an opening in a remodel.

WORKING WITH A DEEP OPENING?

SIMPLY COVER THE ENTIRE OPENING WITH DRYWALL



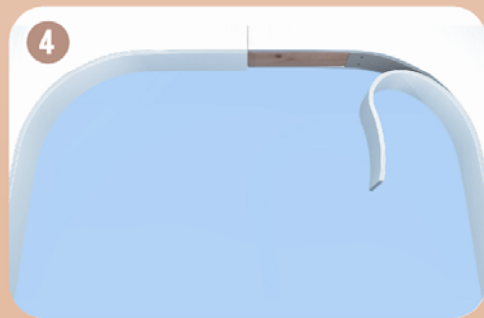
SMOOTH STYLE *to* NEW CONSTRUCTION

(framed opening without drywall)

- 1 Using a screw gun, attach drywall to one side of your opening so that it completely overlaps the Universal Arch Kit.
- 2 Run a wallboard saw (or drywall router) along the Universal Arch Kit, using it as a guide, to cut the drywall.
- 3 Repeat steps 1 & 2 until all sides of the Universal Arch Kit are drywalled.
- 4 Cut a strip of drywall to a width that is flush with the drywalled sides and long enough to cover the Universal Arch Kit by a few inches at each end. Using a screw gun, attach the drywall strip to the curved face of the Universal Arch Kit.



Watch the drywall video at www.ArchKit.com/drywall



Tip: *Wetting the back of the drywall strip and carefully curving it by hand are a few tricks the Pro's use to attach drywall to a curved surface.*



SMOOTH STYLE *in a* REMODEL

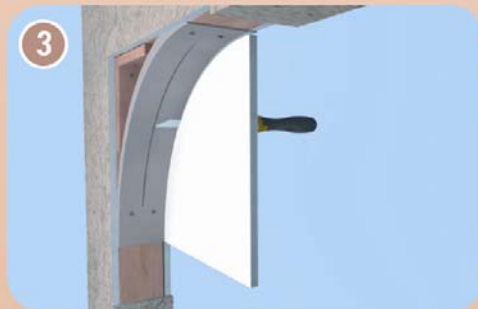
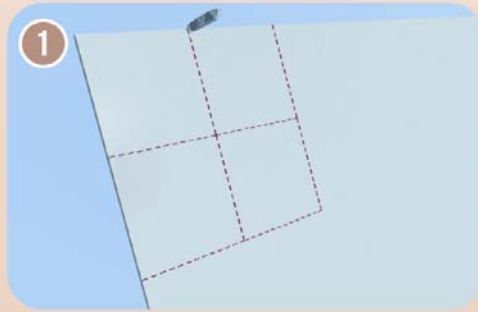
(with existing drywall)

- 1 Using a utility knife, cut out 4 - 13" by 13" drywall squares.
- 2 Using a screw gun, attach one 13" drywall square to one side of your opening.
- 3 Run a wallboard saw (or drywall router) along the Universal Arch Kit, using it as a guide, to cut the drywall.
- 4 Repeat steps 1-3 until all sides of the Universal Arch Kit are drywalled.
- 5 Cut a strip of drywall to a width that is flush with the drywall sides and 31 1/8" long. Using a screw gun, first butt the drywall to your existing drywall, then attach the drywall strip to the curved face of the Universal Arch Kit.



Watch the drywall video at www.ArchKit.com/drywall

Tip: Wetting the back of the drywall strip and carefully curving it by hand are a few tricks the Pro's use to attach drywall to a curved surface.



STEPPED STYLE *to* NEW CONSTRUCTION

(framed opening without drywall)

- 1 Using a screw gun, attach drywall to one side of your opening so that it completely overlaps the Universal Arch Kit and blocking.
- 2 Run a wallboard saw (or drywall router) along the Universal Arch Kit and blocking, using it as a guide, to cut the drywall.
- 3 Repeat steps 1 & 2 until all sides of the Universal Arch Kit are drywalled.
- 4 Cut and attach a strip of drywall to a width that is flush with the drywalled sides and long enough to cover the ends of the step blocks and Universal Arch Kit.
- 5 Cut a strip of drywall to a width that is flush with the drywall sides and to a length of 20 5/8" if using 1/4" drywall, 21 1/8" if using 1/2" drywall, 20 7/8" if using 3/8" drywall, or 21 3/8" if using 5/8" drywall. Using a screw gun, attach the drywall strip flush with both ends of the drywall step.

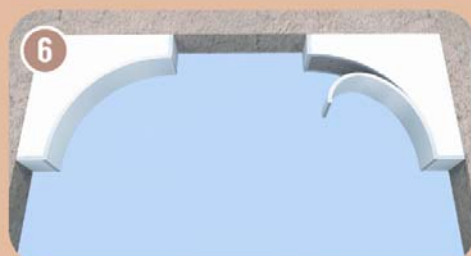
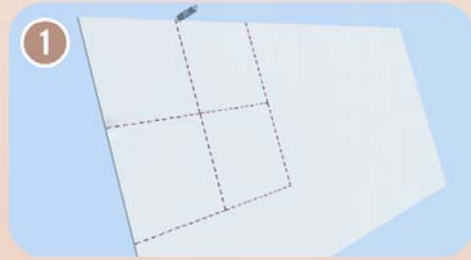


Watch the drywall video at
www.ArchKit.com/drywall

STEPPED STYLE *in a* REMODEL

(with existing drywall)

- 1 Using a utility knife, cut out 4 - 16" by 16" drywall squares.
- 2 Using a screw gun, attach one 16" drywall square to one side of your opening.
- 3 Run a wallboard saw (or drywall router) along the Universal Arch Kit, using it as a guide, to cut the drywall.
- 4 Repeat steps 1-3 until all sides of the Universal Arch Kit are drywalled.
- 5 Cut and attach a strip of drywall to a width that is flush with the drywalled sides and long enough to cover the ends of the step blocks and Universal Arch Kit.
- 6 Cut a strip of drywall to a width that is flush with the drywall sides and to a length of 20 5/8" if using 1/4" drywall, 21 1/8" if using 1/2" drywall, 20 7/8" if using 3/8" drywall, or 21 3/8" if using 5/8" drywall. Using a screw gun, attach the drywall strip flush with both ends of the drywall step.



Watch the drywall video at
www.ArchKit.com/drywall

UNIVERSAL

ARCH KIT

by **ARCHWAYS
&
CEILINGS**
MADE EASY

Thanks

for your interest in our product.

If along the way you have any questions
regarding the installation of your Universal
Arch Kit please feel free to contact us.



Archways & Ceilings

Universal Arch Kit

2441 Houston Street

Grand Prairie, TX 75050

Call: **855-ARCHPRO** (855-272-4776)

Support@ArchKit.com



www.ArchKit.com

U.S. Patent Numbers 4,955,168; 5,459,974; 5,584,148; 5,649,393; 5,815,990; 6,128,864; 6,370,826 and other Patents Pending.