

# UNIVERSAL

# PRODUCTS

by ARCHWAYS  
& CEILINGS  
MADE EASY

UNIVERSAL  
**GROIN  
KIT**



UNIVERSAL  
**DOME  
KIT**



UNIVERSAL  
**BARREL  
KIT**



UNIVERSAL  
**COVE  
KIT**



UNIVERSAL  
**ARCH  
KIT**



*We also make custom archway and ceiling kits to your measurements!*



**FOR PROS *and*  
DO-IT-YOURSELFERS**

[www.ArchKit.com](http://www.ArchKit.com)

# UNIVERSAL

# PRODUCTS

by ARCHWAYS  
& CEILINGS  
MADE EASY

## THE PERFECT SOLUTION FOR YOU!

If you've ever admired the elegance of an archway or been awed by an arched ceiling, but weren't sure if such a project would fall within your budget – you've found your solution. Archways and arched ceilings have historically been skill dependent, costly, and very time consuming. We've got some good news for you... not anymore! Our prefab archway and ceiling systems designed for PROs, but easy enough for DIYers, eliminates the skill, makes it affordable and saves a ton of time!

## FOR NEW CONSTRUCTION *or* REMODELS

Whether you're working on a new construction project or a remodel, our archway and ceiling kits come with robust installation instructions tailored to your construction setting. Plus, several of our kits have a number of different installation styles that give you the flexibility to further customize your design. With a little imagination, your curve appeal is within reach.



## UNIVERSAL PRODUCTS vs CUSTOM ARCHWAY & CEILING KITS

The Universal Products are the flagship products for each of our different archway and ceiling kits. They're the most popular sizes and styles, neatly packed and ready to go! But, don't forget that we can also make archway and ceiling kits to your measurements.

**Chances are if you can think it, then we can make it.**



# WHY USE OUR ARCHWAY & CEILING KITS?

We all know the importance of a home's "curb appeal." It's the make it or break it moment when potential buyers drive up to your home and either decide to drive on and keep looking or check out what's inside. Once inside, what's going to "WOW" your potential buyers? They've already come to expect granite counter tops, open floor plans and lots of storage. How about your home's "curve appeal?" What would a Universal Dome Kit in the entry tell your potential customers?

Or what about a Universal Barrel Kit over your bath tub? How about a Universal Cove Kit in the master bedroom? ***We're willing to bet they'll say, "WOW!"***

This brochure is only the beginning. Visit us online at [www.archkit.com](http://www.archkit.com) to learn more, get ideas and get inspired, watch videos, download PDF instructions and much more. Your "curve appeal" is just around the bend.



UNIVERSAL GROIN KIT.....	PAGE 3 - 4
UNIVERSAL DOME KIT.....	PAGE 5 - 6
UNIVERSAL BARREL KIT.....	PAGE 7 - 8
UNIVERSAL COVE KIT.....	PAGE 9 - 10
UNIVERSAL ARCH KIT.....	PAGE 11 - 12
CUSTOM PRODUCTS.....	PAGE 13 - 14



## ARCHWAYS & CEILINGS MADE EASY

We give our customers access to detailed, step-by-step instructions for our Universal and Custom Products via printed booklets or downloadable sheets at [www.archkit.com](http://www.archkit.com). ***We live up to our company's name!***

# UNIVERSAL

# GROIN KIT

by

ARCHWAYS  
& CEILINGS  
MADE EASY



Pic features 2 Universal Barrel Kits and 1 Universal Groin Kit.



**INCLUDES 16 TOTAL STRUTS (4 STRUTS *per* SIDE)** THE LARGEST STRUT IS MADE IN HALVES

WATCH OUR  
HOW-TO VIDEO  
ONLINE



With multiple Universal Groin Kits you can create impressive hallways.

## THE UNIVERSAL GROIN KIT

You want curve appeal... we'll give you curve appeal! The Universal Groin Kit formed by two intersecting barrel ceilings draws the eyes up toward the center. Where the barrel ceilings come together they create ribs that add both strength and visual appeal. Depending on how you finish it, it can look subdued or quite ornate. Now you can get your little piece of Romanesque Architecture at home.

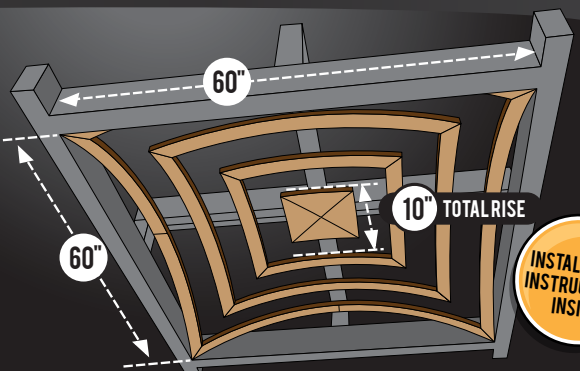
The Universal Groin Kit is 5'-0" wide, with 10" of total rise that makes

it perfect for entryways, master bedrooms, hallways and more. Want to really make it pop? Combine 2 Universal Barrel Kits with 1 Universal Groin Kit to create a groin vault cross (see inset picture). So, what are you waiting for... your curve appeal is just around the bend.



- ★ FOR PROS & DO-IT-YOURSELFERS
- ★ FOR NEW CONSTRUCTION OR REMODELS
- ★ PERFECT FOR ENTRYWAYS, MASTER BEDROOMS & HALLWAYS!

## 5' x 5' GROIN *with a* TOTAL RISE *of* 10"



INSTALLATION  
INSTRUCTIONS  
INSIDE

# Custom GROIN VAULTS

by ARCHWAYS & CEILINGS MADE EASY



WE MAKE CUSTOM GROIN VAULT KITS TO YOUR MEASUREMENTS!

**How to Measure a Groin Vault**

**Understanding the Measurements**

**Long Side** - the longer wall  
**Short Side** - the shorter wall  
**Rise** - the curvature of the groin vault

- Determine the length of the long side of your groin vault by measuring your shorter wall to the nearest 1/8".
- Determine the length of the short side of your groin vault by measuring your shorter wall to the nearest 1/8".
- Determine the rise of your groin vault. Please note that your groin vault will drop an additional 2" due to the thickness of the material and installation technique.
- Determine your location. The groin vault kit will be labeled with the location of where it will be installed. This will ensure accurate placement during installation.

Qty	Long Side	Short Side	Rise	Location
1	144 5/8"	120 1/8"	24"	Dining Rm.

**Finding Your Rise**

When determining your rise please use several different approaches. The two most important factors that have an effect on finding "rise" are your clearance and your ceiling height.

Please refer to the "Clearance" section below to learn understand how clearance can define your rise.

The second most important factor when determining your rise is your ceiling height. The lower your ceiling height the less rise you have available. Note - most the lower portion of a groin vault is to dip in with the four corners. For example, low ceiling heights. If you choose to rise 2" above 2'-0", the corners would be at 4"-0" from the floor, but your corner would still be at 18" 0".

The most popular method for choosing a rise is by measuring the clearance and ceiling height in order to take a middle. We have found that most builders like to use a 20% multiplier. They will multiply the short side by 20% to find their rise. Using the triangle below, the short side is 120". You would take 120" x 20% to arrive at a rise of 24" or 2'-0".

**Clearance**

A key factor in determining your rise is the location of your existing and incoming. A groin vault dips in the four corners with the location containing the highest point. It is important to take note of the rise, as to not exceed the existing ceiling or clearance.

If you have any questions about the placement of your groin vault relative to your existing and incoming, please call our "Picture This" 3D CAD service for assistance.

Not being satisfied? View the photo gallery on page 4 of our kit.

www.ArchKit.com

Qty	Long Side	Short Side	Rise	Location
1	144 5/8"	120 1/8"	24"	Dining Rm.

WRITE DOWN YOUR NOTES ABOVE AND YOU'LL BE READY TO ORDER.  
 DOWNLOAD OUR "HOW TO MEASURE" SHEET AT [WWW.ARCHKIT.COM](http://WWW.ARCHKIT.COM)

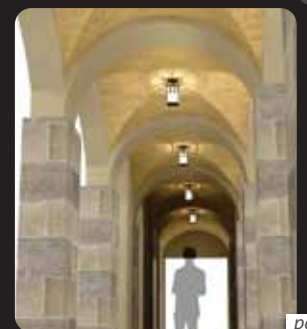
**PICTURE THIS**

**3D CAD**

"Picture This!" is where we provide you with a 3D computer aided design (CAD) that will allow you to picture it before you buy it.

If you are questioning yourself about whether a groin vault will look good in a certain area, hesitant about clearance issues (e.g. roof rafters if you're framing up into your attic, or ceiling height if you're dropping below your current ceiling, etc.), or you're a bit indecisive and need a visual aid, then "Picture This!" is just what you're looking for.

Visit [www.ArchKit.com](http://www.ArchKit.com) for more information.



# UNIVERSAL

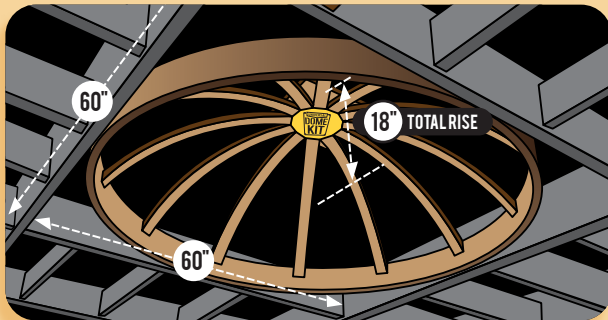
# by DOME KIT

ARCHWAYS & CEILINGS  
MADE EASY



FITS a 5FT BOX with a TOTAL RISE (HEIGHT) of 18 INCHES

WATCH OUR  
HOW-TO VIDEO  
ONLINE



## THE UNIVERSAL DOME KIT

Want to make your competition down the street green with envy? Then add the "WOW" factor to your homes with the Universal Dome Kit. Finally, an affordable 5'-0" dome ceiling, with 18" of total rise, at a fraction of the cost of competitive products or building it yourself. Plus, it's perfect for entryways, master baths, dining rooms and more. It's flexible enough to be installed up into your attic or framed below your current ceiling. And, installation will be a breeze since



we've engineered it to be super simple and so easy that anyone can install it. It doesn't stop there; we even make our dome kit easy to drywall. We've put a rafter drywall template on the bottom of the box. So, what are you waiting for... put your competition to shame.

- ★ FOR PROS & DO-IT-YOURSELFERS
- ★ FOR NEW CONSTRUCTION OR REMODELS
- ★ PERFECT FOR FOYERS, MASTER BATHS, DINING ROOMS & MORE!

## WHAT'S INCLUDED IN THE KIT:



INSTALLATION  
INSTRUCTIONS  
INSIDE

# Custom DOMEs by ARCHWAYS & CEILINGS MADE EASY



**WE MAKE CUSTOM DOME CEILING KITS TO YOUR MEASUREMENTS!**

**How to Measure a Dome Ceiling**

**Understand the Measurements**

**1** Measure the width of your required ring.

**2** Determine if you would like to have an inner light ring. This is done in "Yes" or "No" options. Note: Please reference the "Inner Light Ring" section of the light ring kit.

**3** Choose your dome style with or without an inner light ring. Note: Please reference "Clearance" section on the light ring kit.

**4** Determine your location. The dome ceiling kit will be installed with the location of where it will be installed. This will ensure accurate placement during installation.

**Inner Light Rings**

Inner light rings are an extra way to add indirect lighting to your dome ceiling. Please note that when adding an inner light ring, the finished opening in your ceiling will be smaller than the rough opening by 1" or 2". This is due to the fact that all inner light rings are finished 1/2" in from the outer ring. Therefore, depending on the style you want, make the floor opening into the dome, you may want to add a hole in your floor to allow the electrical wire to feed when adding an inner light ring.

**Clearance**

Most of the time, domes are framed built with your ceiling and the space above the space. Occasionally, builders will put a drop or beam ceiling if they do not have sufficient height in the attic space or if it cannot justify a second floor. When ordering the kit for your dome ceiling, it is important to take note of the collection of the frame and ensure it meets the roof pitch and will be secured to the roof rafters.

**What's Popular?**

What is more popular? To have or not to have an inner light ring?

Yes: Please to have an inner light ring kit. No: Please to have a light ring kit.

What style is most popular?

Yes: Please to have a soft kit. No: Please to have a half circle kit.

© 2018 Archways & Ceilings, LLC. All Rights Reserved. 10000 Archways & Ceilings, LLC. All Rights Reserved. 10000 Archways & Ceilings, LLC. All Rights Reserved.

Qty	Box	Light Ring	Style	Location
1	97 5/8	Yes	Soft	Dining Rm.

Qty	Box	Light Ring	Style	Location
1	97 5/8	Yes	Soft	Dining Rm.

WRITE DOWN YOUR NOTES ABOVE AND YOU'LL BE READY TO ORDER.  
 DOWNLOAD OUR "HOW TO MEASURE" SHEET AT [WWW.ARCHKIT.COM](http://WWW.ARCHKIT.COM)

**PICTURE THIS**

**3D CAD**

"Picture This!" is where we provide you with a 3D computer-aided design (CAD) that will allow you to picture it before you buy it. If you are questioning yourself about whether a dome ceiling will look good in a certain area, hesitant about clearance issues (e.g. roof rafters if you're framing up into your attic, or ceiling height if you're dropping below your current ceiling, etc.), or you're a bit indecisive and need a visual aid, then "Picture This!" is just what you're looking for.

Visit [www.ArchKit.com](http://www.ArchKit.com) for more information.



**UNIVERSAL**

# BARREL KIT

by

**ARCHWAYS  
& CEILINGS  
MADE EASY**



**BARREL WIDTHS** *of 42-66" and* **BARREL LENGTHS** *up to 48"*



## THE UNIVERSAL BARREL KIT

Change your cookie cutter bathrooms, entryways and hallways from average to extraordinary with the Universal Barrel Kit. By simply adding a barrel ceiling, you'll notice how something so simple can have such a dramatic impact on your overall design. Plus, it's been engineered to be super simple and so easy that anyone can install it. Pop it up into your attic or frame it down below your ceiling--both are just as easy. Buy multiple Universal Barrel Kits and barrel an entire hallway. Or, if you want



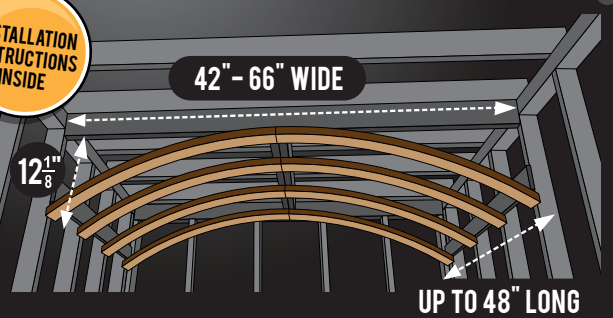
to make your competition drool... combine 2 Universal Barrel Kits with 1 Universal Groin Kit to create a groin vault cross (see inset picture). Sorry, paper towels not included.

- ★ FOR PROS & DO-IT-YOURSELFERS
- ★ FOR NEW CONSTRUCTION OR REMODELS
- ★ PERFECT FOR HALLWAYS, ENTRYWAYS, OVER BATHTUBS & INSET NICHES!

## WHAT'S INSIDE: 4 STRUTS PER BOX



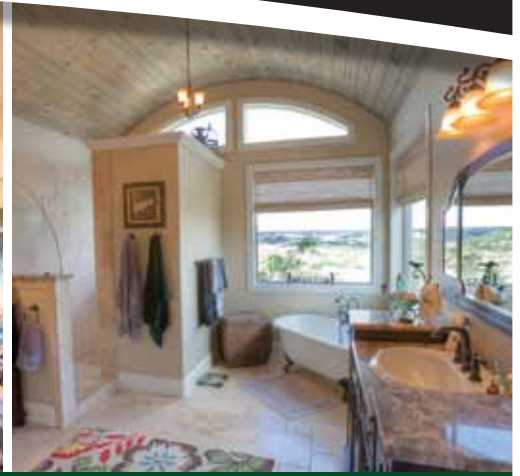
INSTALLATION INSTRUCTIONS INSIDE





# Custom BARREL VAULTS

ARCHWAYS & CEILINGS **MADE EASY**



**WE MAKE CUSTOM BARREL VAULT KITS TO YOUR MEASUREMENTS!**

**How to Measure a Barrel Vault**

**Understanding the Measurements**

**1. Length** - The distance from end to end of the barrel vault. Measure the span of the vault. The offset of the arch is measured from the span of the vault to the lowest point in measurement that location.

**2. Width** - The length of your beam back to the lowest beam back.

**3. Rise** - Measure the width of your beam back to the lowest beam back.

**4. Style** - Choose your style soft, half circle or elliptical. If you choose elliptical the "Rising Over Vault" can be right for the most popular variation at drawing your rise.

**5. Location** - Determine your location. The final vault kit will be tailored with the location of where it will be installed. This will ensure accurate placement during installation.

**Choosing Your Style**

**1. What are your requirements?** - Do you want a soft rise? Do you want a half circle? Do you want a half circle with a soft rise? Do you want a half circle with a soft rise and a soft rise? Do you want a half circle with a soft rise and a soft rise? Do you want a half circle with a soft rise and a soft rise?

**2. Do you have different wall heights?** - If you have different wall heights, you will need to choose a style that will work with the different wall heights. Do you have different wall heights? Do you have different wall heights? Do you have different wall heights?

**3. Do you have a soft rise?** - If you have a soft rise, you will need to choose a style that will work with the soft rise. Do you have a soft rise? Do you have a soft rise? Do you have a soft rise?

**4. Do you have a half circle?** - If you have a half circle, you will need to choose a style that will work with the half circle. Do you have a half circle? Do you have a half circle? Do you have a half circle?

**5. Do you have a half circle with a soft rise?** - If you have a half circle with a soft rise, you will need to choose a style that will work with the half circle with a soft rise. Do you have a half circle with a soft rise? Do you have a half circle with a soft rise? Do you have a half circle with a soft rise?

**How to Measure a Barrel Vault**

Qty	Length	Width	Rise	Style	Location
1	144 3/8	56 1/2	12	Soft	Bedroom Hallway

**Rise Chart**

Width	Rise	Width	Rise
0 - 12"	2"	96 - 108"	18"
12 - 24"	4"	108 - 120"	20"
24 - 36"	6"	120 - 132"	22"
36 - 48"	8"	132 - 144"	24"
48 - 60"	10"	144 - 156"	26"
60 - 72"	12"	156 - 168"	28"
72 - 84"	14"	168 - 180"	30"

Download this kit at Archways & Ceilings - 1441 Mountain Road - Grand Rapids, MI 49508  
www.ArchKit.com

Qty	Length	Width	Rise	Style	Location
1	144 3/8	56 1/2	12	Soft	Bedroom Hallway

**Optional Rise Chart**

Width	Rise	Width	Rise
0 - 12"	2"	96 - 108"	18"
12 - 24"	4"	108 - 120"	20"
24 - 36"	6"	120 - 132"	22"
36 - 48"	8"	132 - 144"	24"
48 - 60"	10"	144 - 156"	26"
60 - 72"	12"	156 - 168"	28"
72 - 84"	14"	168 - 180"	30"

- WRITE DOWN YOUR NOTES ABOVE AND YOU'LL BE READY TO ORDER.
- DOWNLOAD OUR "HOW TO MEASURE" SHEET AT [WWW.ARCHKIT.COM](http://WWW.ARCHKIT.COM)
- USE ANY RISE, OR REFER TO THIS CHART

**PICTURE THIS**

**3D CAD**

"Picture This!" is where we provide you with a 3D computer aided design (CAD) that will allow you to picture it before you buy it.

If you are questioning yourself about whether a barrel vault will look good in a certain area, hesitant about clearance issues (e.g. roof rafters if you're framing up into your attic, or ceiling height if you're dropping below your current ceiling, etc.), or you're a bit indecisive and a need a visual aid, then "Picture This!" is just what you're looking for.

Visit [www.ArchKit.com](http://www.ArchKit.com) for more information.



# UNIVERSAL

# COVE KIT

by

ARCHWAYS  
&  
CEILING  
MADE EASY



## 40 11 $\frac{1}{4}$ " RADIUS COVE PIECES

ENOUGH COVE PIECES TO FIT A 14x14FT ROOM OR 56 LINEAR FEET @ 16" ON CENTER



## 6 90° CORNERS

REVERSIBLE TO FIT INSIDE AND OUTSIDE CORNERS

## 4 45° INSIDE CORNERS

4 OF THE 40 COVE PIECES HAVE BEEN MODIFIED SO THEY CAN ALSO BE USED AS 45° INSIDE CORNERS

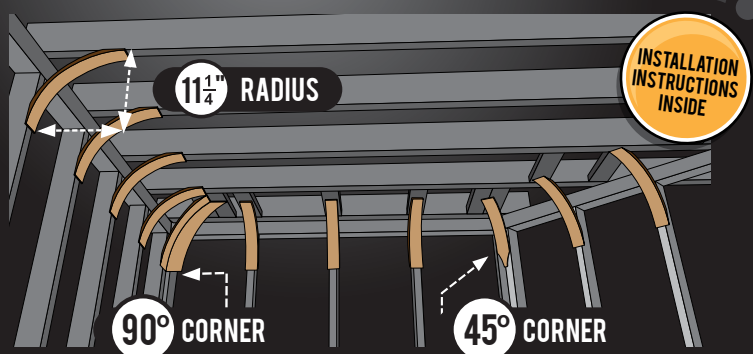
### THE UNIVERSAL COVE KIT

Go from square to flair with the Universal Cove Kit. Sometimes, a straight line from point A to point B is a good thing, but, when it comes to ceilings, it couldn't be more boring. Isn't it time to draw attention to the normally forgotten fifth wall by eliminating the 90° sharp corner created by your wall and ceiling? Choose from one of the four installation styles to spotlight the walls, ceiling or both depending upon your chosen reveal. Plus, it's perfect for

master bedrooms, dining rooms, living rooms, pop-up tray ceilings and more. Oh yeah, and it's flexible enough to be added to almost any project as a last minute addition. So, get your flair on... and let's make that fifth wall stylish!



- ★ FOR PROS & DO-IT-YOURSELFERS
- ★ FOR NEW CONSTRUCTION OR REMODELS
- ★ PERFECT FOR POP-UP TRAY CEILINGS, DINING ROOMS & LIVING ROOMS!



# Custom COVES by ARCHWAYS & CEILINGS **MADE EASY**



**WE MAKE CUSTOM COVE CEILING KITS TO YOUR MEASUREMENTS!**

### How to Measure a Cove Ceiling

**Understanding the Measurements**

**Perimeter:** the distance in feet inches around the wall area being coved.

**Radius:** the radius of the cove.

**Curves:** 90° and 45° inside or outside curves.

- 1 Determine the perimeter of your cove ceiling area for measuring the length of each wall.
- 2 Determine your radius. The radius is how far over your ceiling and how far down on your wall you would like your cove to sit.
- 3 Count the number of inside and outside 90° and 45° corners.
- 4 Determine your location. The cove ceiling kit will be placed with the finished surface of the wall to be installed. This will ensure access to the placement being installation.

**Pop-Up Tray Ceilings**

A Pop-Up Tray ceiling is a perfect place to add a cove ceiling. By simply adding a cove kit to your pop-up tray, you can really enhance the overall look of this room.

**4 Different Ways to Install**

There are 4 different ways to install a cove ceiling. You can choose to have a cove with no reveal, top reveal, bottom reveal, or top and bottom reveal. These choices allow you to add an additional accent to either the wall and/or ceiling.

Qty	Perimeter	Radius	90° Inside	90° Outside	45° Inside	45° Outside	Location
1	528 3/4	14	5	1	0	0	Dining Rm.

©2011 ArchKit, Inc. All Rights Reserved. ArchKit.com

Qty	Perimeter	Radius	90° Inside	90° Outside	45° Inside	45° Outside	Location
1	528 3/4	14	5	1	0	0	Dining Rm.

**WRITE DOWN YOUR NOTES ABOVE AND YOU'LL BE READY TO ORDER.**

**DOWNLOAD OUR "HOW TO MEASURE" SHEET AT [WWW.ARCHKIT.COM](http://WWW.ARCHKIT.COM)**

## PICTURE THIS

3D  
CAD

"Picture This!" is where we provide you with a 3D computer aided design (CAD) that will allow you to picture it before you buy it.

If you are questioning yourself about whether a cove ceiling will look good in a certain area, unsure which installation style you want (e.g. no reveal, top reveal, bottom reveal or top and bottom reveal) or you're a bit indecisive and need a visual aid, then "Picture This!" is just what you're looking for.

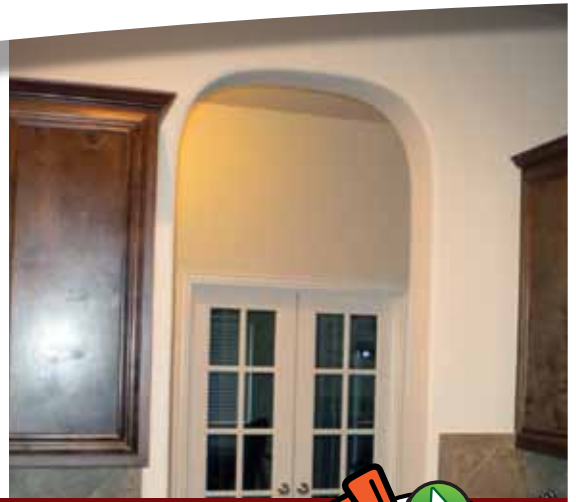
Visit [www.ArchKit.com](http://www.ArchKit.com) for more information.



**UNIVERSAL**

# ARCH KIT by

**ARCHWAYS & CEILING**  
**MADE EASY**



**QUICK & EASY INSTALLATION TO FRAMING *or* DRY WALL**



## THE UNIVERSAL ARCH KIT

Convert your square, dull openings into beautiful arched openings with the Universal Arch Kit. It works with any size opening, whether it is 3 ft. or 30 ft., it will fit them all. And, with the introduction of the split-cut feature, the Universal Arch Kit can be separated with a simple wallboard saw to cover openings from 2x4 wide up to 12" wide. It can also be easily installed to metal framing. Any doorway, any opening, the Universal Arch Kit can do it all.

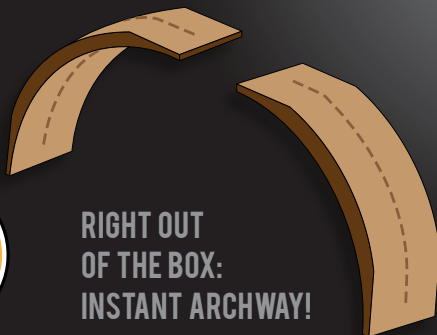
## ACHIEVE 2 DIFFERENT ARCH STYLES



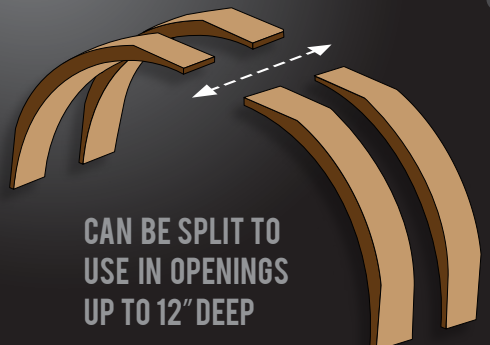
- ★ FOR PROS & DO-IT-YOURSELFERS
- ★ FOR NEW CONSTRUCTION *OR* REMODELS



**INSTALLATION INSTRUCTIONS INSIDE**



**OR**



# Custom ARCHWAYS by

ARCHWAYS  
&  
CEILINGS  
MADE EASY



**WE MAKE CUSTOM ARCHWAY KITS TO YOUR MEASUREMENTS!**



CHOOSE FROM 3 DIFFERENT ARCHES



Qty	Depth	Width	Rise	Style	Location
1	3½	56½	12	Soft	Bedroom Hallway

DOWNLOAD OUR "HOW TO MEASURE" SHEET AT [WWW.ARCHKIT.COM](http://WWW.ARCHKIT.COM)

WRITE DOWN YOUR NOTES ABOVE AND YOU'LL BE READY TO ORDER.



"Picture This!" is where we provide you with a 3D computer aided design (CAD) that will allow you to picture it before you buy it.

If you are questioning yourself whether a certain archway will look good in a certain area, unsure which arch style you want (e.g. soft, half-circle or elliptical) or you're a bit indecisive and need a visual aid, then "Picture This!" is just what you're looking for.

Visit [www.ArchKit.com](http://www.ArchKit.com) for more information.



# Custom **ARCHED CEILINGS**

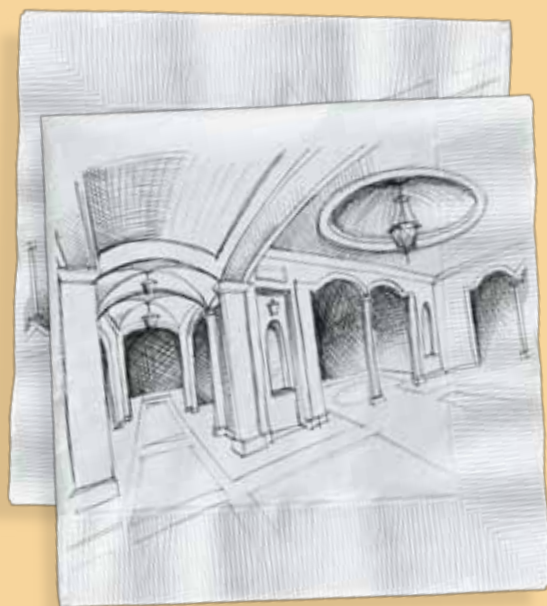


CLOISTER VAULT



CUSTOM RADIUS

**CHANCES ARE, IF YOU CAN THINK OF IT, WE CAN MAKE IT.**



**WE'LL TURN YOUR SKETCHES INTO A COMPUTER-RENDERED MASTERPIECE, THEN CREATE A READY-TO-INSTALL CUSTOM ARCHED CEILING.**

## OUR CUSTOM PRODUCTS

Can't find the specific archway or ceiling kit you're looking for? Have something unique in mind? Then you're in the right spot! Chances are if you can think it, we can make it. Very rarely do we turn down a custom archway or ceiling kit. So, give us a shot! Send us those doodles on your morning coffee napkin, and let's see what you've got in mind.

Combining multiple archways and or ceiling kits are another way our customers have designed a custom ceiling. They might have not known it at first, but once we showed them, most have the "AH-HA!" moment. For example, a customer of ours had a long entry hallway, in which he was "bent" (pun intended) upon having a custom ceiling. However, given the length of the hallway, it would have looked out of place and poorly executed. When we explained this to him, he asked if we could make him a racetrack ceiling. What he wanted and what we made him was what we have coined as an "Elongated Dome Ceiling" which is a cross between a dome ceiling and barrel vault. Needless to say, he was very pleased.

Here are a few other examples: Another customer of ours had us combine a barrel vault with an archway to create what we coined as an "Igloo Ceiling." We have also combined a cove ceiling and a barrel vault to create a "Cloister Vault." Lastly, we combined a groin vault with a dome ceiling to create what we have coined as a "Grome Ceiling." *Your imagination is our only limitation!*

Visit [www.ArchKit.com](http://www.ArchKit.com) for more information.



OVAL COVE



CUSTOM RADIUS



GROIN WITH COVE

**YOUR IMAGINATION IS OUR ONLY LIMITATION!**



GOthic CEILING



IGLOO CEILING



CUSTOM RADIUS



GROME CEILING



OCTAGONAL GROIN



SUSPENDED RADIUS



NICHE



CLOISTER WITH GROIN



ELONGATED DOME

**UNIVERSAL**

**PRODUCTS**



**ARCHWAYS  
&  
CEILINGS  
MADE EASY**

**UNIVERSAL**

**GROINKIT**

**UNIVERSAL**

**DOME KIT**

**UNIVERSAL**

**BARREL KIT**

**UNIVERSAL**

**COVE KIT**

**UNIVERSAL**

**ARCH KIT**

Knock, knock... Who's there?... Arch... Arch who?  
Arch you glad you found this catalog?

Universal Products by **Archways & Ceilings**

Call **855-ARCHPRO** (855-272-4776) or email **Support@ArchKit.com**



[www.ArchKit.com](http://www.ArchKit.com)

U.S. Patent Numbers 4,955,168; 5,459,974;  
5,584,148; 5,649,393; 5,815,990; 6,128,864;  
6,370,826 and other Patents Pending.

**CHANCES ARE IF YOU  
CAN THINK IT, THEN  
WE CAN MAKE IT.**

**Ask about our  
custom products!**